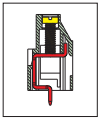


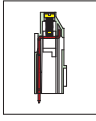
# MB422 PCB Terminal Block, Modular



MB



MB422-500MA



MB422-500MB



## DIMENSIONS/POSITIONS

DIMENSIONS/POSITIONS		MB422-500MA	MB422-500MB
間距	Pitch	5.00mm	5.00mm
位數	Poles	2 ~ 3Poles	2 ~ 3Poles
塑膠本體	Housing Material	PA 66	PA 66
壓線圈	Cage Clamp	Brass, Ni Plated	Brass, Ni Plated
端子	Contact	Brass, Tin Plated	Brass, Tin Plated
螺紋	Screw Thread	M2.6, Steel, Zinc Plated	M2.6, Steel, Zinc Plated
電線線徑	Wire Size	10 ~ 24AWG	10 ~ 24AWG
剝線長度	Wire Strip Length	8mm	8mm
PCB孔徑	PCB Hole Diameter	1.5mm	1.5mm
最大緊固扭矩	Tightening Torque, Max.	6.0 Lb-in	6.0 Lb-in
環境作業溫度	Operating Temperature	-40°C to +105°C	-40°C to +105°C

## TECHNICAL DATA

連接符合標準 Connection in acc. with standard EN-VDE			
額定電流 I <sub>n</sub>	Nominal Current I <sub>n</sub>	25A	25A
額定橫截面	Nominal Cross Section	4.0mm <sup>2</sup>	4.0mm <sup>2</sup>
最大負載電流	Maximum load current	25A	25A
絕緣材料	Insulating Material	PA	PA
阻燃等級,符合UL94 Inflammability class acc. to UL94		V0	V0
額定電壓,UL/CUL Nominal voltage, UL/CUL		300V	300V
額定電流,UL/CUL Nominal current, UL/CUL		25A	25A

