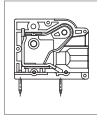
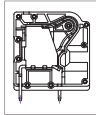


MPX420 PCB Spring Type Terminal Block



MPX420-750



MPX420-100



DIMENSIONS/POSITIONS

DIMENSIONS/POSITIONS		MPX420-750	MPX420-100
間距	Pitch	7.50mm	10.00mm
位數	Poles	2 ~ 12Poles	2 ~ 9Poles
塑膠本體	Housing Material	PA 66	PA 66
端蓋	Cover	PA 66	PA 66
端子	Contact	Copper, Tin Plated	Copper, Tin Plated
彈片	Spring	Stainless Strip Steel	Stainless Strip Steel
保護鐵片	Metal Frame	Steel, Zinc Plated	Steel, Zinc Plated
電線線徑	Wire Size	8 ~ 24AWG	4 ~ 20AWG
剝線長度	Wire Strip Length	15mm	18mm
PCB孔徑	PCB Hole Diameter	2.1mm	1.7mm
環境作業溫度	Operating Temperature	-40°C to +105°C	-40°C to +105°C

TECHNICAL DATA

連接符合標準 Connection in acc. with standard EN-VDE			
額定電流 I _n	Nominal Current I _n	41A	76A
額定橫截面	Nominal Cross Section	-	-
最大負載電流	Maximum load current	41A	76A
絕緣材料	Insulating Material	PA	PA
阻燃等級,符合UL94 Inflammability class acc. to UL94		V0	V0
額定電壓,UL/CUL Nominal voltage, UL/CUL		600V	600V
額定電流,UL/CUL Nominal current, UL/CUL		36A	66A

