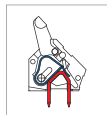


# MWX101 PCB Spring Type Terminal Block



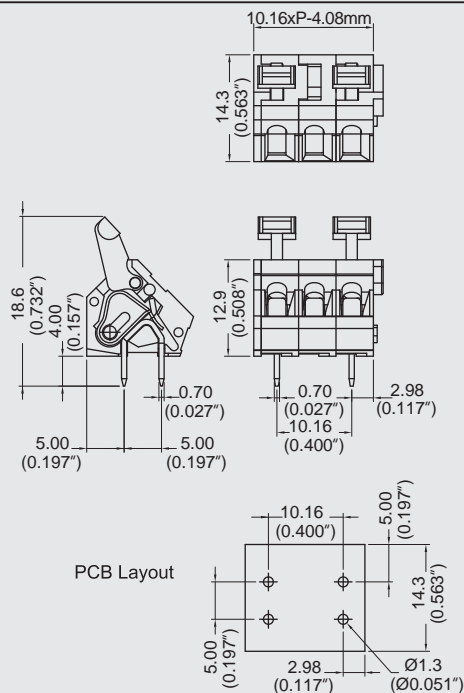
## DIMENSIONS/POSITIONS

MWX101-016

間距	Pitch	10.16mm
位數	Poles	2 ~ 20Poles
塑膠本體	Housing Material	PA 66
端蓋	Cover	PA 66
端子	Contact	Brass, Tin Plated
彈片	Spring	Stainless Strip Steel
電線線徑	Wire Size	14 ~ 28AWG
剝線長度	Wire Strip Length	5mm ~ 6mm
PCB孔徑	PCB Hole Diameter	1.3mm
環境作業溫度	Operating Temperature	-40°C to +105°C

## TECHNICAL DATA

連接符合標準 Connection in acc. with standard EN-VDE		
額定電流 I <sub>n</sub>	Nominal Current I <sub>n</sub>	16A
額定橫截面	Nominal Cross Section	-
最大負載電流	Maximum load current	16A
絕緣材料	Insulating Material	PA
阻燃等級,符合UL94 Inflammability class acc. to UL94		V0
額定電壓,UL/CUL Nominal voltage, UL/CUL		300V
額定電流,UL/CUL Nominal current, UL/CUL		16A



MWX