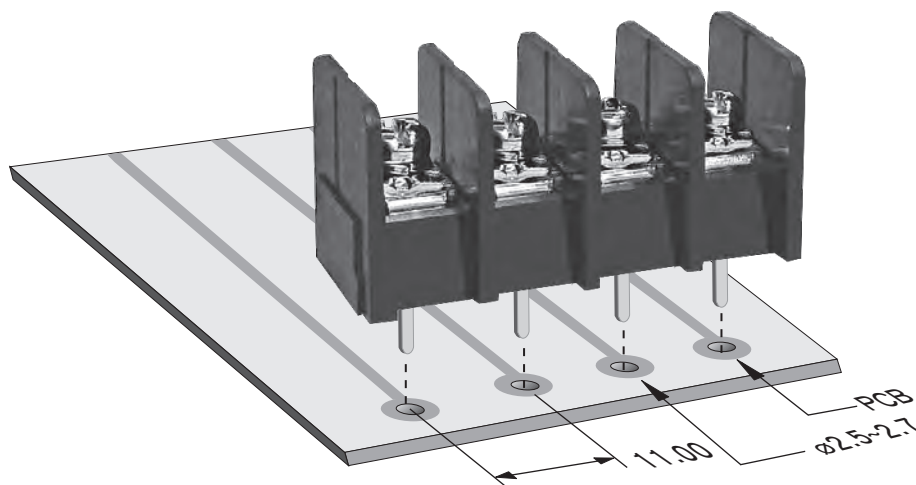



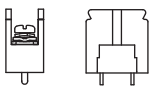
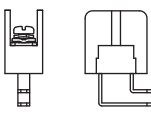

## TYPE: TA6 (貫通式端子台)

Pitch:11.00mm



## ORDER GUIDE(注文方法):

### TA6-B M10 04

Body(本体)	Terminal style(端子スタイル)	Poles(極数)
<p>B: 取付穴・カバー無し、壁有り (Barrier Ends)    K: 取付穴・壁有り、カバー付き (Mount Ends and Cover)</p> 	<p>D10 </p> <p>X02 </p>	<p>02 ⋮ ⋮ ⋮ ⋮ ⋮ ⋮ ⋮ 10</p>
<p>E: 取付穴無し、壁有り、カバー付き (Barrier Ends with Cover)</p> 		

## SPECIFICATION(規格,仕様):

Terminal :	Brass, Tin plated, 1.0 t	端子金具 :	黄銅板 ハンダメッキ, 1.0 t
Insulator body :	PBT(UL94V-0), Black	本体 :	PBT(UL94V-0), 黒色
Screw :	M4.0, steel, Ni plated	端子ネジ :	M4.0, 鉄ニッケルメッキ
Cover :	PC	カバー :	PC
Operation temperatures :	-40° C to +120° C	使用温度範囲 :	-40° C to +120° C
Rated current :	40Amp 600V	定格 :	40Amp 600V
Insulation withstands volt :	2000V 1min	耐電圧 :	2000V 一分間
Insulation resistance :	2000MΩ at DC 500V	絶縁抵抗 :	DC 500V 2000MΩ
PCB hole Dia :	∅ 2.5mm~∅ 2.7mm	基板穴径 :	∅ 2.5mm~∅ 2.7mm
Wire range :	10~18 AWG	適合電線 :	10~18 AWG
Screw torque :	14 lb-in	締付トルク :	14 lb-in
	Screw with washer		ワッシャー付ネジ

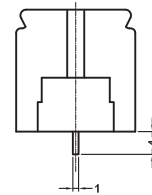
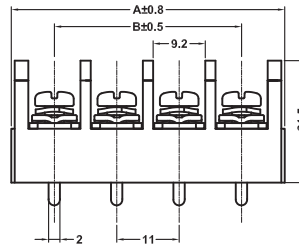
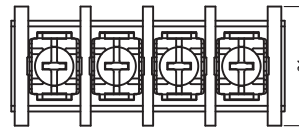
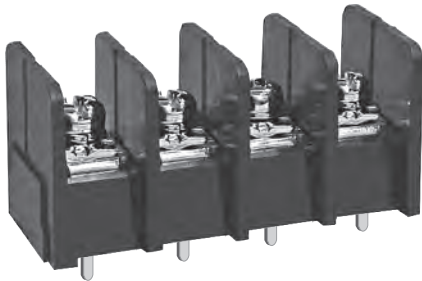
# .433" PCB Barrier Terminal Blocks

TYPE: TA6

Pitch: 11.00mm

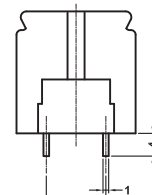
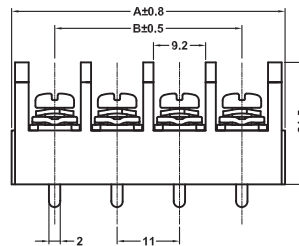
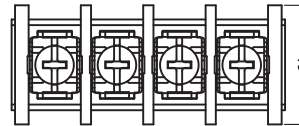
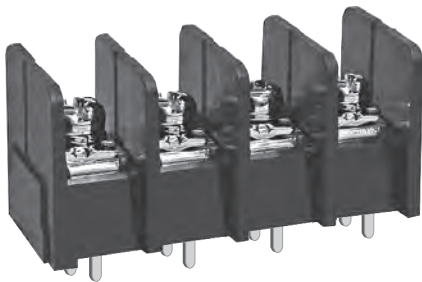
## TA6-BM10-04

## Terminal style:M10



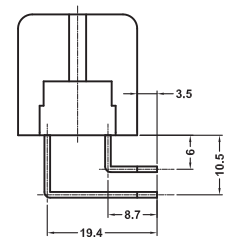
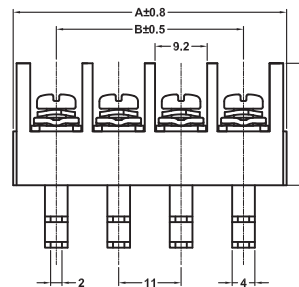
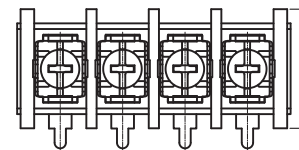
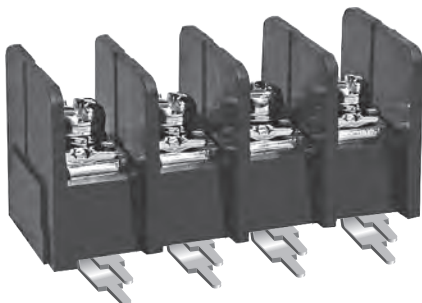
## TA6-BD10-04

## Terminal style:D10



## TA6-BX02-04

## Terminal style:X02



Poles	2	3	4	5	6	7	8	9	10	11
A(mm)	25.00	36.00	47.00	58.00	69.00	80.00	91.00	102.00	113.00	124.00
B(mm)	11.00	22.00	33.00	44.00	55.00	66.00	77.00	88.00	99.00	110.00