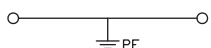
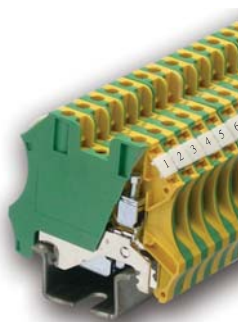
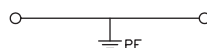
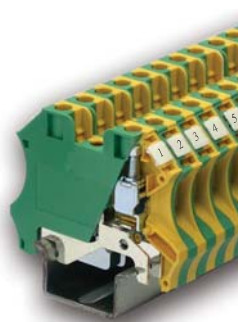


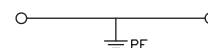
CPE 4



CPE 6



CPE 10



Specifications (產品規格)	4 mm ²	6 mm ²	10 mm ²
Technical Data (技術參數)	Rated voltage/Rated current/Wire size	Rated voltage/Rated current/Wire size	Rated voltage/Rated current/Wire size
UL	AWG 10-26	AWG 8-26	AWG 6-16
CSA	AWG 10-26	AWG 8-26	AWG 6-16
IEC	0.5-4mm ²	0.5-6mm ²	1.5-10mm ²
Insulating impulse voltage withstand / Pollution degree (額定衝擊電壓 / 污染等級)	8KV / 3	8KV / 3	8KV / 3
Torque (lb-in) (扭緊力矩)	8.5	16	18
Clamping Screw (M) (螺絲)	M3	M4	M4
Insulation stripping length(mm) (剝線長度)	10-14 mm	12-16 mm	12-16 mm
Material/Available Color (材質顏色)			
Rail Dimensions (導軌尺寸)	T / W / H (mm)	T / W / H (mm)	T / W / H (mm)
For TS35x7.5	6 x 57 x 47.5	8 x 57 x 47.5	10 x 57 x 47.5
For TS35x15	6 x 57 x 55	8 x 57 x 55	10 x 57 x 55
Accessories (附件)	Cat. No. Qty.	Cat. No. Qty.	Cat. No. Qty.
End Bracket (終端擋板)	SEW35 50	SEW35 50	SEW35 50
	CEW35/2 50	CEW35/2 50	CEW35/2 50
Comb Link (邊接式聯接件)	CQB 4/2 50	CQB 6/2 50	CQB 10/2 50
	CQB 4/3 50	CQB 6/3 50	CQB 10/3 50
	CQB 4/10 20	CQB 6/10 20	CQB 10/4 20
Marking Tags (標記號)	W6 W6Z W6K 500	W6 W6Z W6K 500	W6 W6Z W6K 500
	W8 W8Z W8K 400	W8 W8Z W8K 400	W8 W8Z W8K 400
Protection Cover (防觸蓋)	DP1 20	DP1 20	DP1 20
Retaining Plates (中界板)	AD1 50	AD1 50	AD1 50
Tool (工具)	DS3	DS4	DS4