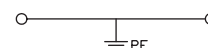
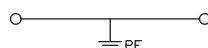
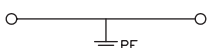


CPE 16

CPE 35

CPE 50



手机/微信: 13655187271 <http://www.decachina.com/>

Specifications (產品規格)	16 mm ²	35 mm ²	50 mm ²
Technical Data (技術參數)	Rated voltage/Rated current/Wire size	Rated voltage/Rated current/Wire size	Rated voltage/Rated current/Wire size
UL	AWG 6-14	AWG 2-10	AWG 1/0-6
CSA	AWG 6-14	AWG 2-10	AWG 1/0-6
IEC	2.5-16mm ²	4-35mm ²	16-50mm ²
Insulating impulse voltage withstand / Pollution degree (額定衝擊電壓 / 污染等級)	8KV / 3	8KV / 3	8KV / 3
Torque (lb-in) (扭緊力矩)	35	51	70
Clamping Screw (M) (螺絲)	M5	M6	M6
Insulation stripping length(mm) (剝線長度)	14-18 mm	14-18 mm	20-25 mm
Material/Available Color (材質顏色)			
Rail Dimensions (導軌尺寸)	T / W / H (mm)	T / W / H (mm)	T / W / H (mm)
For TS35x7.5	12 x 57 x 63.5	16 x 57 x 63.5	20 x 70.5 x 76
For TS35x15	12 x 57 x 71	16 x 57 x 71	20 x 70.5 x 83.5
Accessories (附件)	Cat. No. Qty.	Cat. No. Qty.	Cat. No. Qty.
End Bracket (終端擋板)	SEW35 50 CEW35/1 50	SEW35 50 CEW35/1 50	SEW35 50 CEW35/1 50
Comb Link (邊接式聯接件)			
Marking Tags (標記號)	W6 W6Z W6K 500 W8 W8Z W8K 400	W6 W6Z W6K 500 W8 W8Z W8K 400	W6 W6Z W6K 500 W8 W8Z W8K 400
Protection Cover (防觸蓋)	DP1 20	DP1 20	
Retaining Plates (中界板)	AD2 50	AD2 50	
Tool (工具)	DS5	S6	DS5 DS6