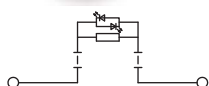
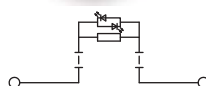


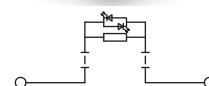
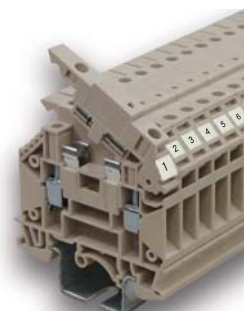
CTR 6SI



CTR 10SI



CTR4SI-EN



Specifications (產品規格)	6 mm ²	10 mm ²	4 mm ²
Technical Data (技術參數)	Rated voltage/Rated current/Wire size	Rated voltage/Rated current/Wire size	Rated voltage/Rated current/Wire size
UL	400 V/20A/AWG 8-20	400 V/ 20 A/AWG 6-16	UL 600 V / 7.5A/AWG 10-22
CSA	400 V/ 20A/AWG 8-20	400 V/ 20 A/AWG 6-16	600 V / 7.5A/AWG 10-22
IEC	500V/20A/0.5-6 mm ²	500 V/20 A/1.5-10mm ²	800 V / 10A /0.5-4mm ²
Insulating impulse voltage withstand /Pollution degree (額定衝擊電壓 /污染等級)	8KV / 3	8KV / 3	6KV / 3
Torque (lb-in) (扭緊力矩)	14	19	7.7
Clamping Screw (M) (螺絲)	M4	M4	M3
Insulation stripping length(mm) (剝線長度)	12-14 mm	12-14 mm	10-12mm
Material/Available Color (材質顏色)			
Rail Dimensions (導軌尺寸)	T / W / H (mm)	T / W / H (mm)	T / W / H (mm)
For TS35x7.5	8 x 60 x 47.5 + 31.5(CSI6)	10 x 60 x 47.5 + 31.5(CSI10)	8 x 60 x 54.5
For TS35x15	8 x 60 x 55 + 31.5(CSI6)	10 x 60 x 55 + 31.5(CSI10)	8 x 60 x 62
Accessories (附件)	Cat. No. Qty.	Cat. No. Qty.	Cat. No. Qty.
End Bracket (終端擋板)	SEW35 50 CEW35/2 50	SEW35 50 CEW35/2 50	SEW 35 50 CEW 35/2 50
End Plate (擋板)	CEP 5 50	CEP 5 50	CEP 5 50
Partition (擋板/隔片)	CEP 2 50	CEP 2 50	
Comb Link (連接式聯接件)	CQB 6/2 50	CQB 10/2 50	CQB 6/2 50
	CQB 6/3 50	CQB 10/3 50	CQB 6/3 50
	CQB 6/10 20	CQB 10/10 20	CQB 6/10 50
MarkingTags (標記號)	W6 W6Z W6K 500 W8 W8Z W8K 400	W6 W6Z W6K 500 W8 W8Z W8K 400	W6 W6Z W6K 500 W8 W8Z W8K 500
	Test plug (測試插頭)	-	-
Socket (測試插孔)	-	-	-
Diode Plug (二極體插頭)	+ - CSD6 25	+ - CSD10 25	
	- + CSD6 25	- + CSD10 25	
LED Fuse Type (顯示型保險絲插座) Insert	CSI6 25	CSI10 25	
Protection Cover (防觸蓋)	-	-	-
Retaining Plates (中界板)	-	-	-
Tool (工具)	DS4	DS4	DS3